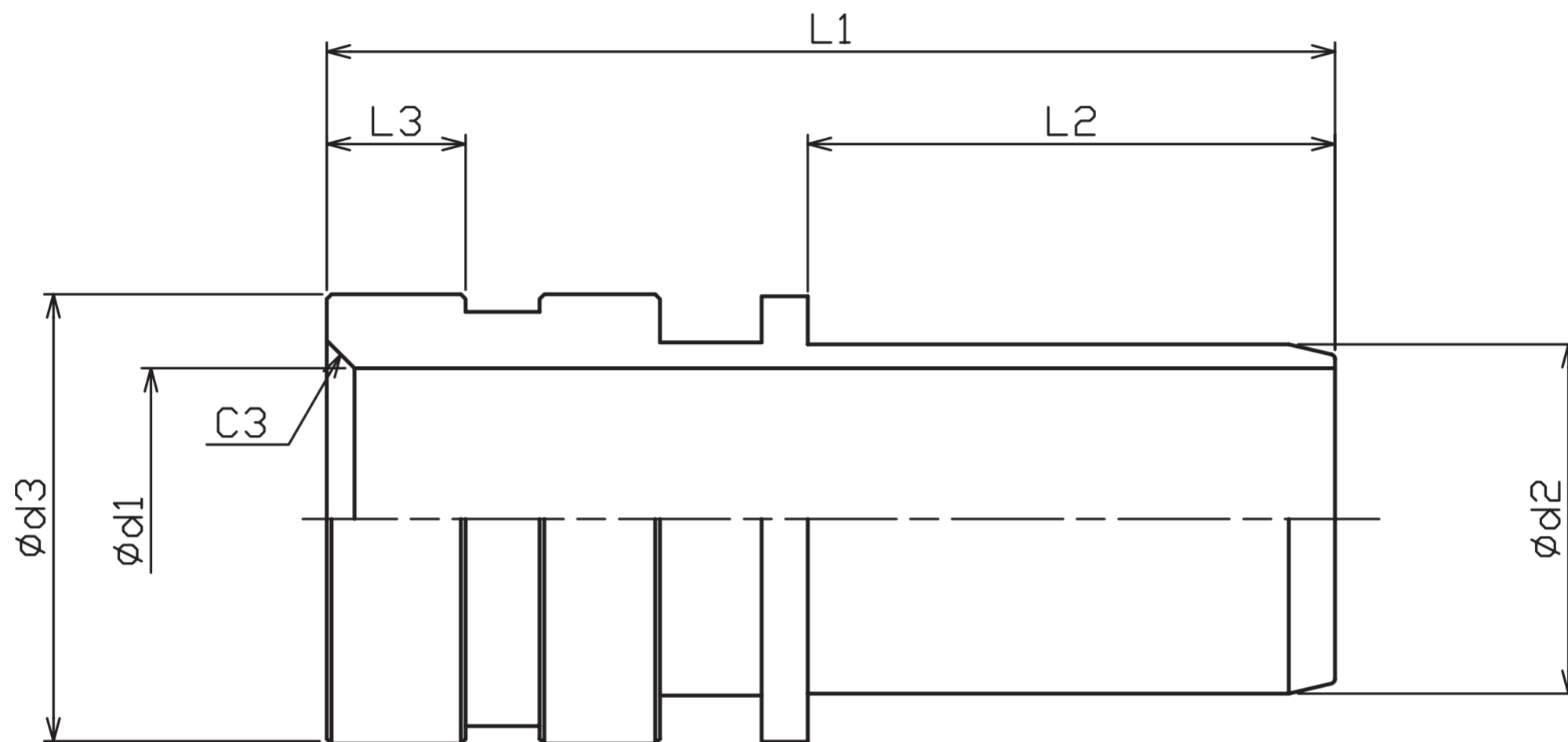


# G Collar nipple for SHIME-TOTAKU

Material / วัสดุ | SS, SUS



(mm)

Nominal diameter	d1	d2	d3	L1	L2	L3
38	32.6 (34.4)	37.8	48.6	107	55	
50	43.5	50.5	60.5	115	62	15.0
65	56.3 (57.3)	63.0	76.3	126	72	
75	69.1 (66.9)	76.0	89.1	140	83	
100	96.0 (94.0)	101.0	114.3	160	98	16.0

※ The value of ( ) is SUS. / ค่าใน ( ) คือ SUS