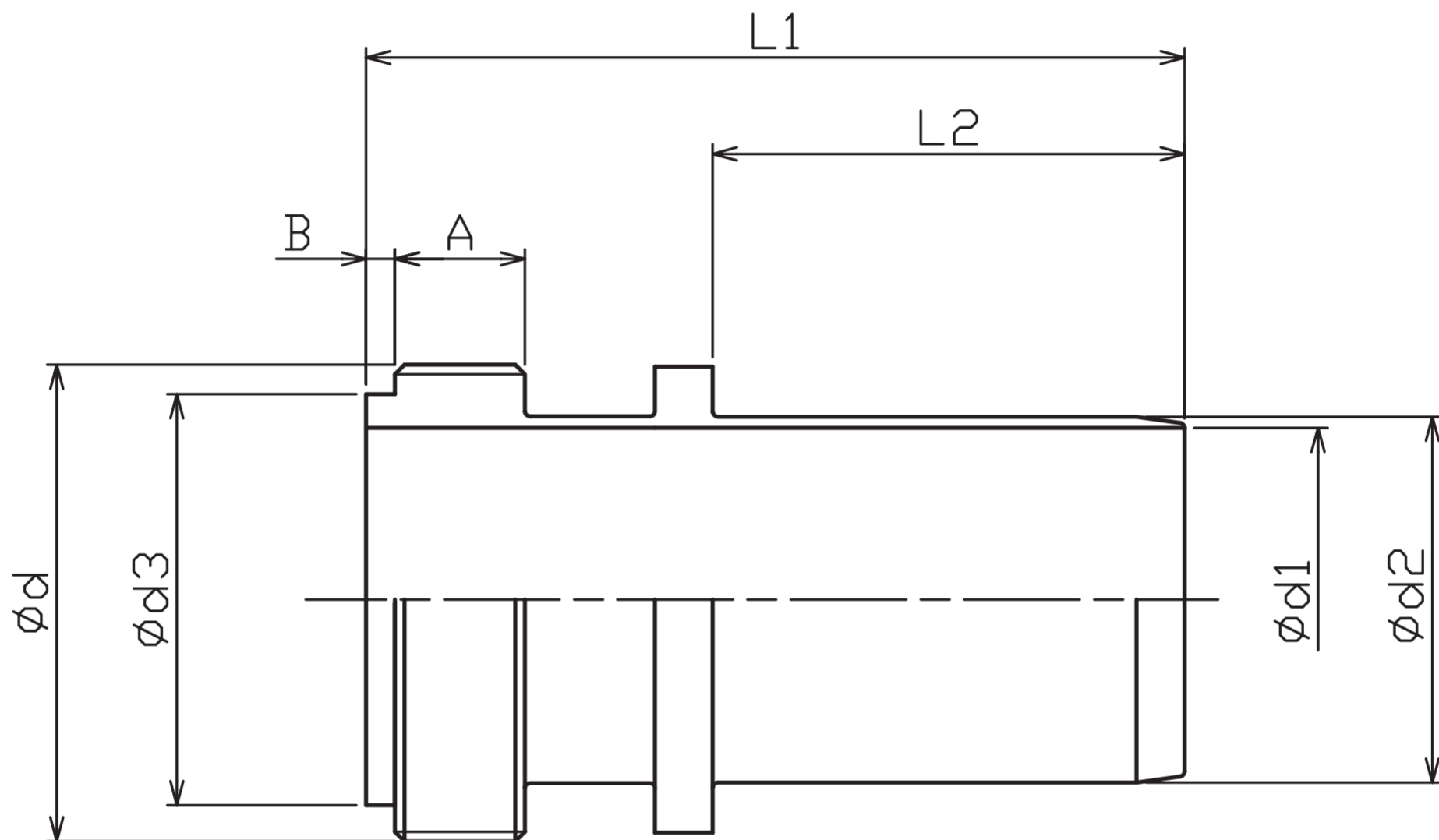


IDF Male Part nipple for SHIME-TOTAKU

Material / วัสดุ | SUS



(mm)

Nominal diameter	d	d1	d2	d3	L1	L2	A	B
38	50.65-8 Threads/inch	35.7	37.8	42.7	85	55		
50	64.16-8 Threads/inch	47.8	50.5	56.2	100	62	13.5	3.0
65	77.67-8 Threads/inch	59.5	63.0	69.9	110	72		
75	91.19-8 Threads/inch	72.3	76.0	82.6	120	83		