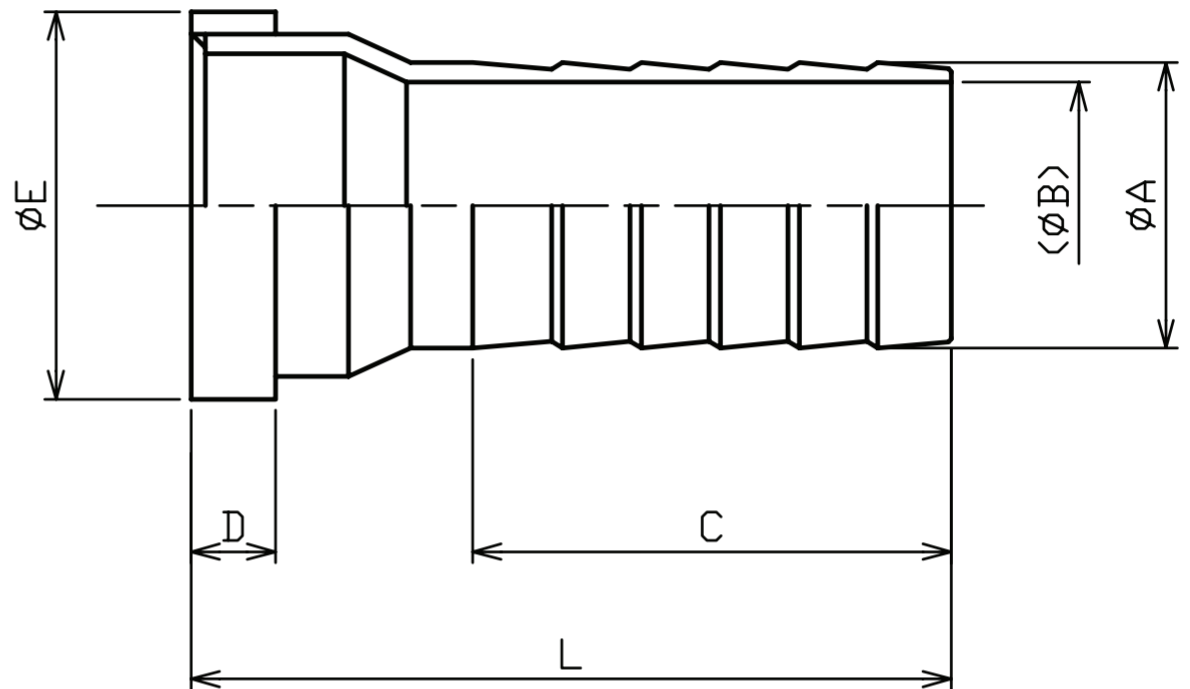


S Collar nipple

Material / วัสดุ | SS, SUS



ϕ 25~125



(mm)

Nominal diameter	A	B	C	D	E	L
25	27.0	20.4 (21.2)	70		39.0	101
32	34.0	27.2 (28.0)			48.6	105
38	40.0	34.0	85	15	54.0	121
50	50.8	43.8 (44.8)			66.5	135
65	63.5	56.5 (57.5)	105		82.5	140
75	76.3	67.9 (70.3)	108		97.0	154
100	101.6	93.2 (93.6)	120		122.0	174
125	127.0	120.0 (119.0)	124	16	148.0	190
150	152.4	143.2	165		174.5	235
200	204.4	195.7 (190.9)	190		228.5	280
250	254.0	242.0 (248.8)	276	19	279.5	345
300	304.0	289.9 (297.9)	336		330.0	405

※ The value of () is SUS. / ค่าใน () คือ SUS